



Schweizerische Eidgenossenschaft  
Confédération suisse  
Confederazione Svizzera  
Confederaziun svizra

Federal Department of the Environment,  
Transport, Energy and Communications DETEC  
**Swiss Federal Office of Energy SFOE**

June 2017

---

# Energy Consumption in Switzerland 2016

---

Extract from the Swiss Overall Energy Statistics 2016

Available from August 2017 (German/French)

BBL/Bundespublikationen, 3003 Bern

Phone +41 58 465 50 50

Order by internet: [www.bundespublikationen.admin.ch](http://www.bundespublikationen.admin.ch)

Order number: 805.006.16 d/f

Internet: [www.bfe.admin.ch/statistics](http://www.bfe.admin.ch/statistics)

Mühlestrasse 4, CH-3063 Ittigen  
Postal address: CH-3003 Bern  
Phone +41 58 462 56 11, Fax +41 58 463 25 00  
[contact@bfe.admin.ch](mailto:contact@bfe.admin.ch)  
[www.bfe.admin.ch](http://www.bfe.admin.ch)



## Final Energy Consumption

Table 1

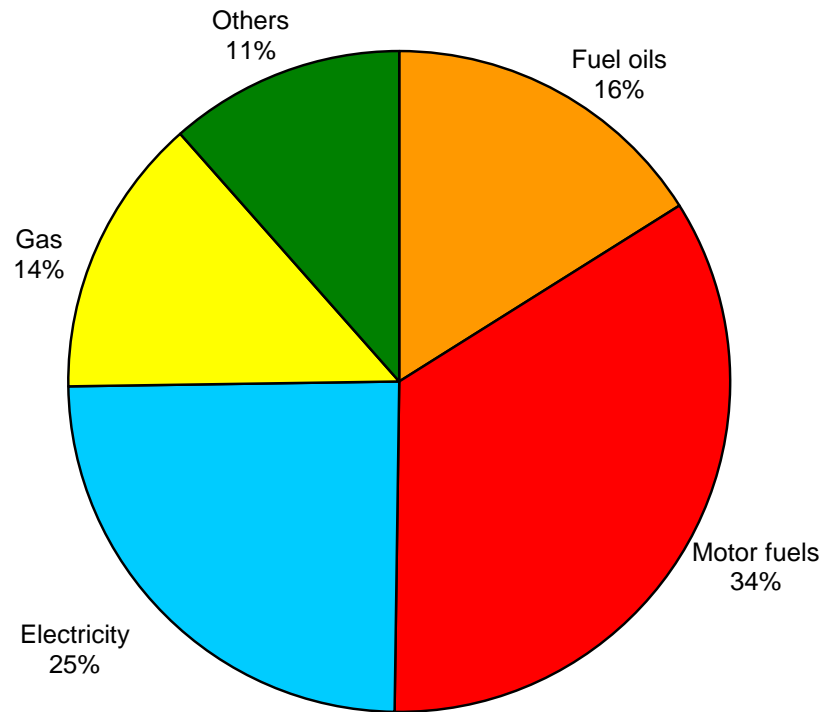
Energy source	Final consumption in original units		Final consumption in TJ		Change in %	Share in %	
	2015	2016	2015	2016	2015-2016	2015	2016
Petroleum products	9'894'000 t	10'010'000 t	424'420	429'060	1,1	50,6	50,2
Electricity	58'246 GWh	58'239 GWh	209'690	209'660	0,0	25,0	24,5
Gas *	31'372 GWh	32'563 GWh	112'940	117'230	3,8	13,5	13,7
Coal	214'000 t	197'000 t	5'210	4'790	-8,1	0,6	0,6
Wood	-	-	36'680	39'480	7,6	4,4	4,6
District heating	5'125 GWh	5'444 GWh	18'450	19'600	6,2	2,2	2,3
Waste	-	-	10'190	10'790	5,9	1,2	1,3
Other renewable Energy	-	-	20'570	23'690	15,2	2,5	2,8
thereof Biofuels			2'070	3'560	72,0	0,2	0,4
Biogas **			1'750	1'750	0,0	0,2	0,2
Solar thermal			2'360	2'450	3,8	0,3	0,3
Ambient heat from soil, groundwater, air, etc.			14'400	15'930	10,6	1,7	1,9
Total final consumption	-	-	838'150	854'300	1,9	100	100

\* Net calorific value (NCV: 36,3 MJ/Norm m<sup>3</sup>); in gas industry the gross calorific value (GCV: 40,3 MJ/Norm m<sup>3</sup>) is commonly used; NCV = 0,9 \* GCV

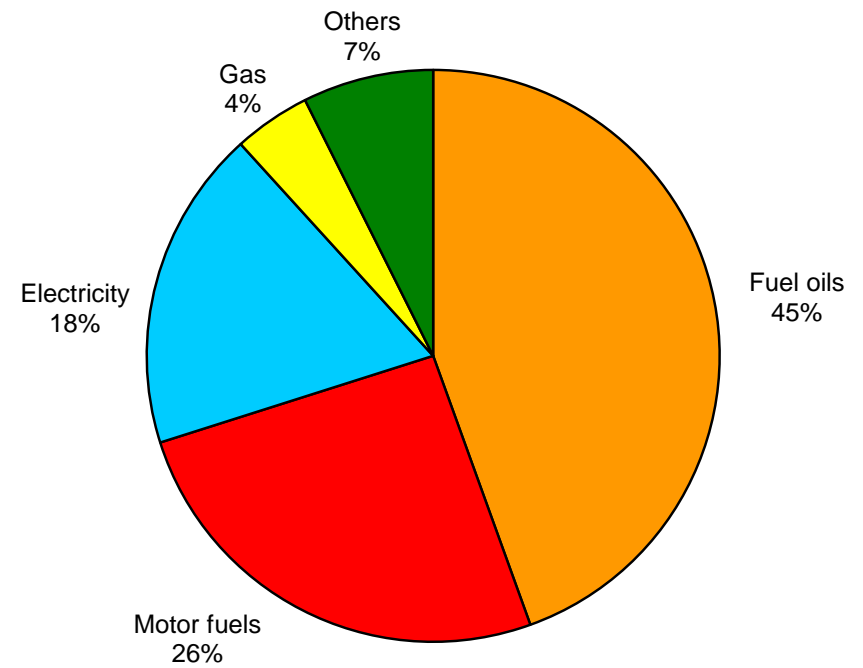
\*\* In 2016, 1'000 TJ of Biogas was injected into the gas distribution system and is included in Gas (2015: 850 TJ)



**Final Energy Consumption 2016**  
(Total: 854'300 TJ)



**Final Energy Consumption 1980**  
(Total: 698'290 TJ)





## Petroleum Products

Table 2

	Consumption in 1000 t		Consumption in TJ		Change in %	Share in %	
	2015	2016	2015	2016	2015-2016	2015	2016
<u>Fuel oils</u>							
Extra-light heating oil	3'013	3'085	129'260	132'350	2,4	30,5	30,8
Heavy fuel oil	6	3	250	120	-52,0	0,1	0,0
Petroleum coke	25	56	800	1'750	122,5	0,2	0,4
Others	78	65	3'590	2'990	-16,7	0,8	0,7
Total fuel oils	3'122	3'209	133'890	137'240	2,5	31,5	32,0
<u>Motor fuels</u>							
Gasoline	2'490	2'412	106'070	102'750	-3,1	25,0	23,9
Diesel oil	2'643	2'672	113'650	114'900	1,1	26,8	26,8
Aviation fuel	1'639	1'717	70'810	74'170	4,7	16,7	17,3
Total motor fuels	6'772	6'801	290'530	291'820	0,4	68,5	68,0
<u>Total petroleum products</u>	9'894	10'010	424'420	429'060	1,1	100	100



## Electricity

Table 3

	GWh (1 GWh = 3,6 TJ)		Change in % 2015-2016	Share in %	
	2015	2016		2015	2016
<u>Production:</u>					
Hydroelectric plants	39'486	36'326	-8,0	59,9	59,0
Nuclear power plants	22'095	20'235	-8,4	33,5	32,8
Conventional thermal power plants: <i>thereof</i>	2'660	3'072	15,5	4,0	5,0
- <i>non-renewable</i>	1'545	1'891	22,4	2,3	3,1
- <i>renewable</i>	1'115	1'181	5,9	1,7	1,9
Miscellaneous renewables: <i>thereof</i>	1'716	1'983	15,6	2,6	3,2
- <i>Wood</i>	184	220	19,9	0,3	0,4
- <i>Biogas</i>	304	321	5,7	0,5	0,5
- <i>Photovoltaics</i>	1'119	1'333	19,2	1,7	2,2
- <i>Wind</i>	110	109	-1,3	0,2	0,2
<b>Domestic production</b>	<b>65'957</b>	<b>61'616</b>	<b>-6,6</b>	<b>100</b>	<b>100</b>
Consumption by storage pumps (-)	2'296	2'922	27,3	3,5	4,7
<b>Net production</b>	<b>63'661</b>	<b>58'694</b>	<b>-7,8</b>	<b>96,5</b>	<b>95,3</b>
Import (+)	42'306	38'019	-10,1	-	-
Export (-)	43'341	34'096	-21,3	-	-
Export balance	-1'035	3'923	-	1,7	6,3
<b>Domestic consumption</b>	<b>62'626</b>	<b>62'617</b>	<b>-0,0</b>	<b>100</b>	<b>100</b>
Losses (-)	4'380	4'378	-0,0	7,0	7,0
<b>Final consumption</b>	<b>58'246</b>	<b>58'239</b>	<b>-0,0</b>	<b>93,0</b>	<b>93,0</b>
<u>Final consumption by sector:</u>				100	100
Households	18'762	19'078	1,7	32,2	32,8
Agriculture	984	976	-0,8	1,7	1,7
Industry	17'990	17'761	-1,3	30,9	30,5
Services	15'766	15'622	-0,9	27,1	26,8
Transport**	4'744	4'802	1,2	8,1	8,2

\*\* thereof railways 2016: 3'199 GWh (2015: 3'136 GWh)



## Gas

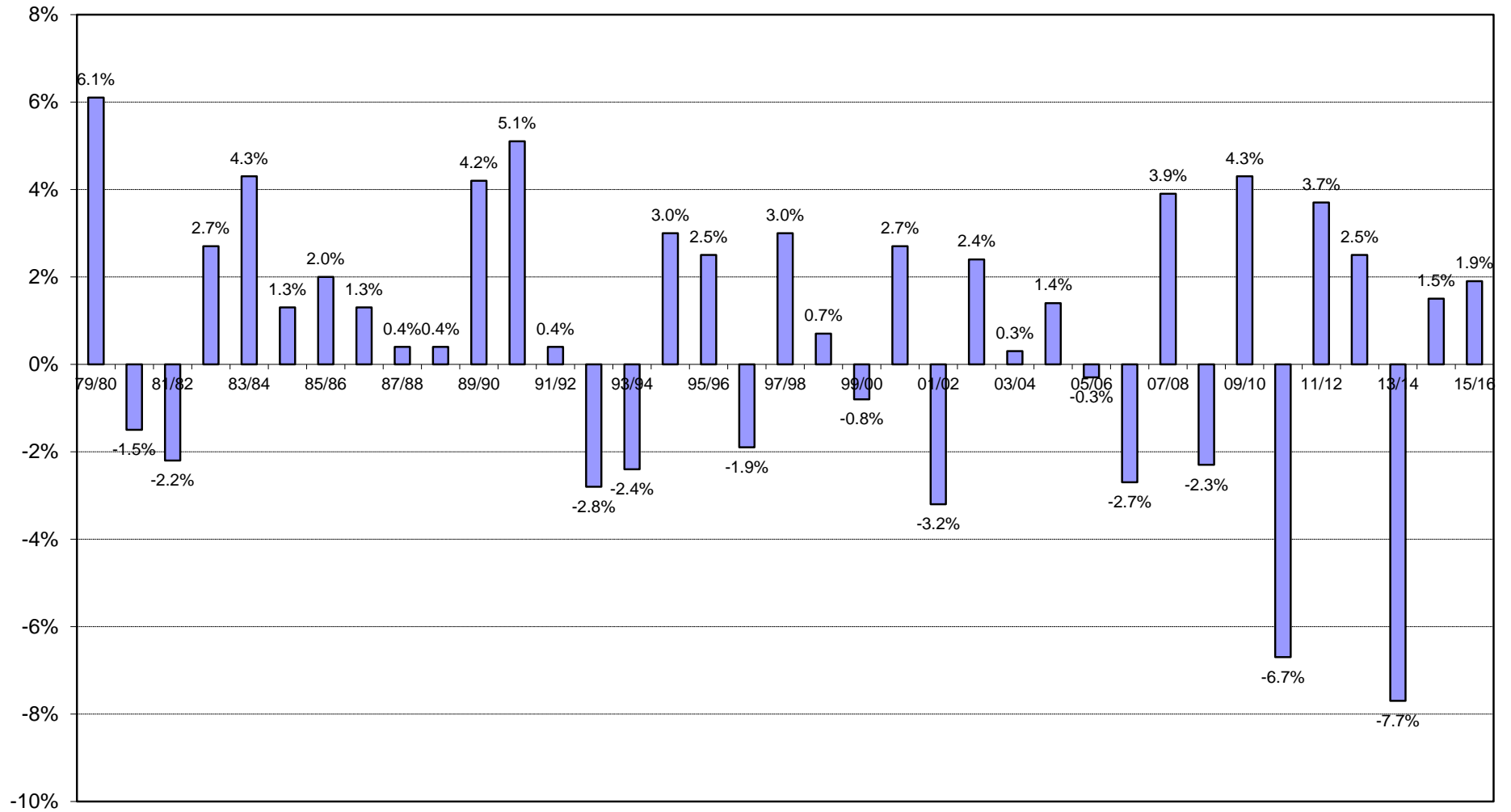
Table 4

	GWh* (1 GWh = 3,6 TJ)		TJ		Change in %
	2015	2016	2015	2016	2015-2016
Gas-works gas made of propane/butane	-	-	-	-	-
Feed-in of biogas into the gas distribution system	236	277	850	1'000	-
Imports of natural gas	33'172	34'849	119'420	125'460	5,1
Total	33'408	35'126	120'270	126'460	5,1
less:					
Natural gas used for district heating and electricity production	1'928	2'453	6'940	8'830	-
Distribution losses and gasworks' own consumption	108	110	390	400	-
Final consumption	31'372	32'563	112'940	117'230	3,8

\* net calorific value (NCV: 36,3 MJ/Norm m<sup>3</sup>); in gas industry the gross calorific value (GCV: 40,3 MJ/Norm m<sup>3</sup>) is commonly used; NCV = 0,9 \* GCV.



### Rate of Change in Final Energy Consumption per Year





### Final Energy Consumption since 1910

