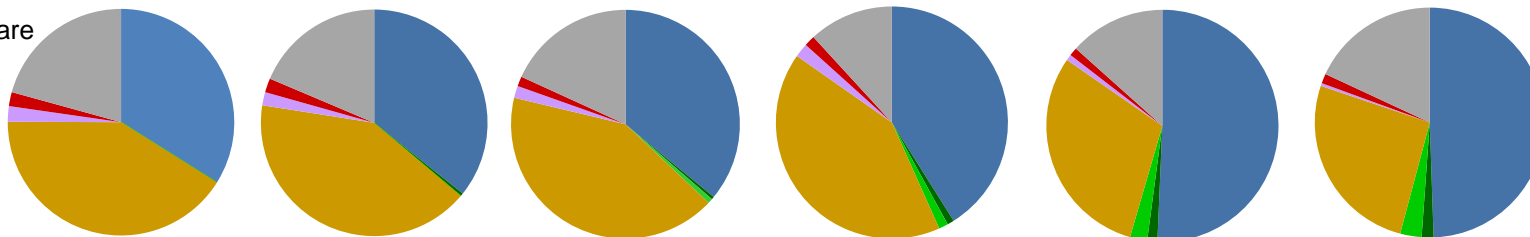


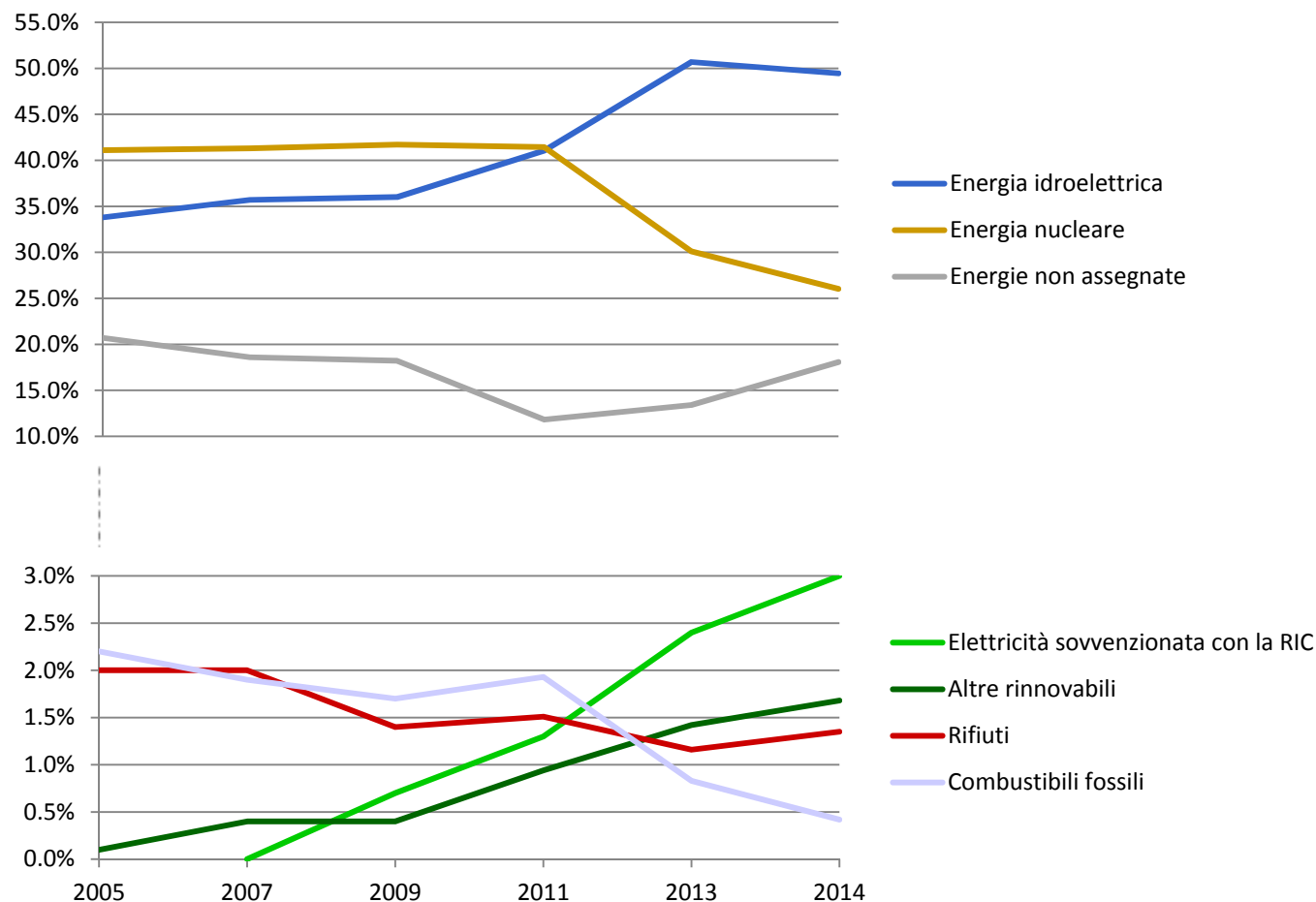
Etichettature elettricità 2005 - 2014 totale (= Svizzera + l'estero) e solo quota svizzera

	2005 ¹⁾		2007 ¹⁾		2009 ¹⁾		2011 ¹⁾		2013 ¹⁾		2014	
	Totale	Svizzera	Totale	Svizzera	Totale	Svizzera	Totale	Svizzera	Totale	Svizzera	Totale	Svizzera
Energie rinnovabili	33.8%	32.3%	36.1%	33.5%	37.1%	31.9%	43.31%	34.14%	54.51%	46.00%	54.13%	47.35%
Energia idroelettrica	33.8%	32.2%	35.7%	33.2%	36.0%	30.9%	41.07%	32.49%	50.69%	42.76%	49.45%	43.32%
Altre rinnovabili	0.1%	0.1%	0.4%	0.3%	0.4%	0.2%	0.94%	0.35%	1.42%	0.84%	1.68%	1.03%
Fotovoltaico	< 0.1 %	0.0%	0.0%	0.0%	< 0.1 %	< 0.1 %	0.19%	0.13%	0.33%	0.31%	0.53%	0.52%
Eolico	< 0.1 %	0.0%	0.1%	0.0%	0.2%	< 0.1 %	0.56%	0.04%	0.61%	0.06%	0.71%	0.08%
Biomassa	< 0.1 %	0.0%	0.1%	0.1%	0.2%	0.2%	0.19%	0.18%	0.48%	0.47%	0.44%	0.43%
Geotermia	< 0.1 %	0.0%	0.1%	0.1%	0.0%	0.0%	0.00%	0.00%	0.00%	0.00%	0.00%	0.00%
Elettricità sovvenzionata con la RIC	0.0%	0.0%	0.0%	0.0%	0.7%	0.7%	1.30%	1.30%	2.40%	2.40%	3.00%	3.00%
Energie non rinnovabili	43.3%	29.3%	43.2%	30.0%	43.3%	31.1%	43.36%	31.77%	30.93%	27.63%	26.45%	23.13%
Energia nucleare	41.1%	27.3%	41.3%	29.5%	41.7%	30.9%	41.43%	31.59%	30.10%	27.29%	26.03%	23.04%
Combustibili fossili	2.2%	1.6%	1.9%	0.5%	1.7%	0.3%	1.93%	0.18%	0.83%	0.34%	0.42%	0.09%
Petrolio	0.3%	0.2%	0.5%	0.2%	0.1%	0.1%	0.06%	0.02%	0.02%	0.00%	0.02%	0.00%
Gas naturale	1.5%	1.3%	1.2%	0.3%	1.5%	0.2%	1.76%	0.15%	0.76%	0.34%	0.38%	0.09%
Carbone	0.1%	0.0%	0.1%	0.0%	0.1%	0.0%	0.11%	0.01%	0.05%	0.00%	0.02%	0.00%
Rifiuti	2.0%	2.0%	2.0%	2.0%	1.4%	1.4%	1.51%	1.50%	1.16%	1.14%	1.35%	1.30%
Energie non assegnate	20.7%		18.6%		18.2%		11.82%		13.40%		18.07%	
Totale	100.0%	63.0%	100.0%	65.5%	100.0%	64.4%	100.00%	67.41%	100.00%	74.77%	100.00%	71.78%

Totale sotto forma di diagramma circolare



Trend¹⁾ (dei valori totali)



¹ Base di dati 2005 – 2013 compreso: Ufficio federale dell'energia (UFE)