



Schweizerische Eidgenossenschaft  
Confédération suisse  
Confederazione Svizzera  
Confederaziun svizra

Federal Department of the Environment,  
Transport, Energy and Communications DETEC  
**Swiss Federal Office of Energy SFOE**

June 2015

---

# Energy Consumption in Switzerland 2014

---

Extract from the Swiss Overall Energy Statistics 2014

Available from August 2015 (German/French)

BBL/Bundespublikationen, 3003 Bern

Phone +41 58 465 50 50

Order by internet: [www.bundespublikationen.admin.ch](http://www.bundespublikationen.admin.ch)

Order number: 805.006.14 d/f

Internet: [www.bfe.admin.ch/statistics](http://www.bfe.admin.ch/statistics)

Mühlestrasse 4, CH-3063 Ittigen  
Postal address: CH-3003 Bern  
Phone +41 58 462 56 11, Fax +41 58 463 25 00  
[contact@bfe.admin.ch](mailto:contact@bfe.admin.ch)  
[www.bfe.admin.ch](http://www.bfe.admin.ch)



## Final Energy Consumption

Table 1

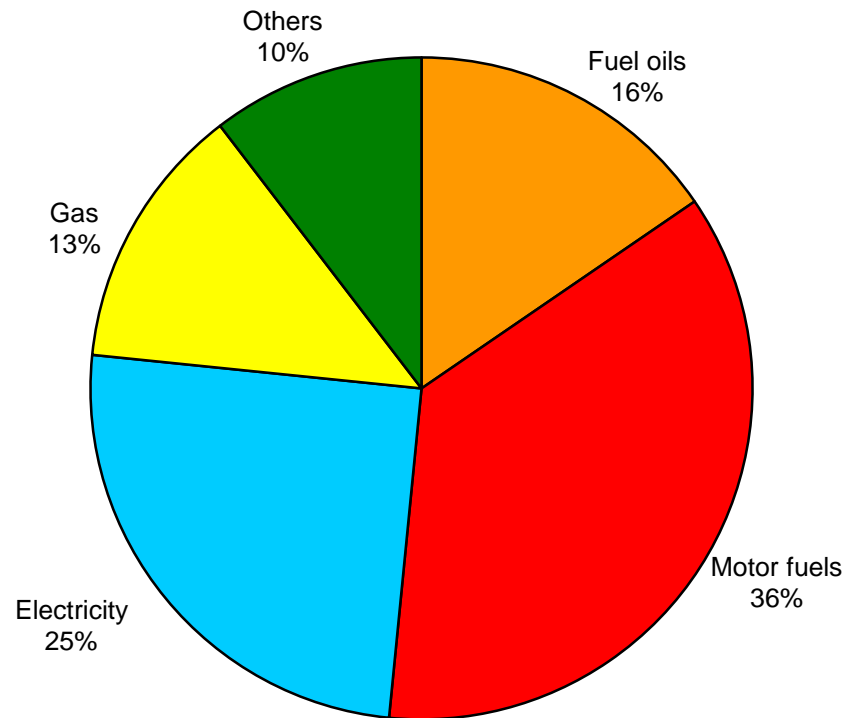
Energy source	Final consumption in original units		Final consumption in TJ		Change in % 2013-2014	Share in %	
	2013	2014	2013	2014		2013	2014
Petroleum products	10'920'000 t	9'932'000 t	468'230	425'810	-9,1	52,3	51,6
Electricity	59'323 GWh	57'466 GWh	213'560	206'880	-3,1	23,9	25,1
Gas *	33'543 GWh	29'751 GWh	120'750	107'100	-11,3	13,5	13,0
Coal	226'000 t	241'000 t	5'670	5'910	4,2	0,6	0,7
Wood	-	-	40'440	34'500	-14,7	4,5	4,2
District heating	4'969 GWh	4'525 GWh	17'890	16'290	-8,9	2,0	2,0
Waste	-	-	10'450	11'830	13,2	1,2	1,4
Other renewable Energy	-	-	17'900	17'450	-2,5	2,0	2,1
thereof Biofuels			480	870	81,3	0,05	0,11
Biogas **			1'750	1'770	1,1	0,20	0,21
Solar thermal			2'040	2'210	8,3	0,23	0,27
Ambient heat from soil, groundwater, air, etc.			13'630	12'600	-7,6	1,52	1,53
Total final consumption	-	-	894'890	825'770	-7,7	100	100

\* Net calorific value (NCV: 36,3 MJ/Norm m<sup>3</sup>); in gas industry the gross calorific value (GCV: 40,3 MJ/Norm m<sup>3</sup>) is commonly used; NCV = 0,9 \* GCV

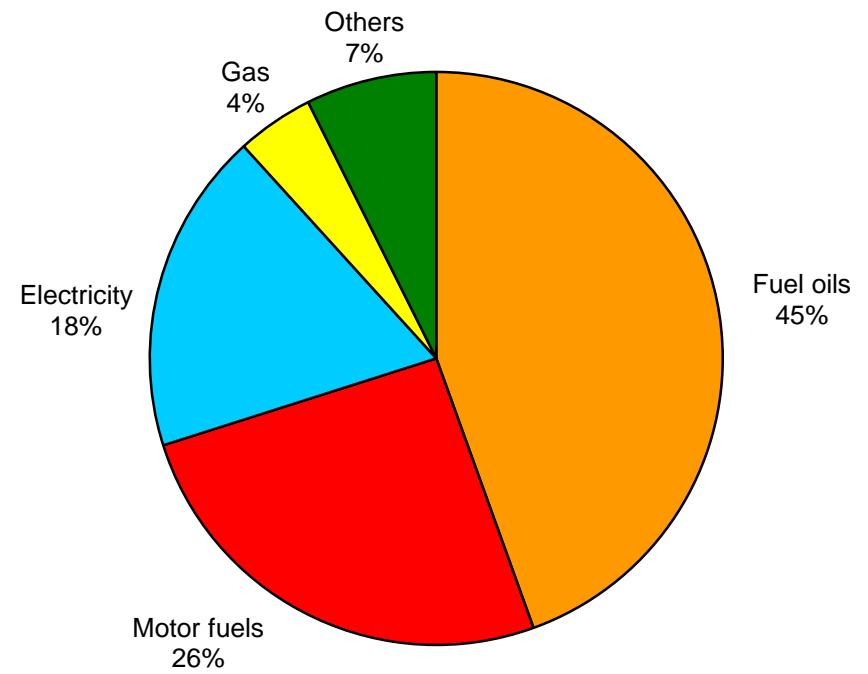
\*\* In 2014, 690 TJ of Biogas was injected into the gas distribution system and is included in Gas (2013: 460 TJ)



**Final Energy Consumption 2014**  
(Total: 825'770 TJ)



**Final Energy Consumption 1980**  
(Total: 698'290 TJ)





## Petroleum Products

Table 2

	Consumption in 1000 t		Consumption in TJ		Change in % 2013-2014	Share in %	
	2013	2014	2013	2014		2013	2014
<u>Fuel oils</u>							
Extra-light heating oil	3'789	2'853	162'550	122'390	-24,7	34,7	28,7
Heavy fuel oil	21	9	870	370	-57,5	0,2	0,1
Petroleum coke	33	39	1'050	1'240	18,1	0,2	0,3
Others	87	77	4'000	3'540	-11,5	0,9	0,8
Total fuel oils	3'930	2'978	168'460	127'550	-24,3	36,0	30,0
<u>Motor fuels</u>							
Gasoline	2'800	2'687	119'280	114'470	-4,0	25,5	26,9
Diesel oil	2'614	2'680	112'400	115'240	2,5	24,0	27,1
Aviation fuel	1'576	1'587	68'080	68'560	0,7	14,5	16,1
Total motor fuels	6'990	6'954	299'770	298'260	-0,5	64,0	70,0
<u>Total petroleum products</u>	10'920	9'932	468'230	425'810	-9,1	100	100



## Electricity

Table 3

	GWh (1 GWh = 3,6 TJ)		Change in % 2013-2014	Share in %	
	2013	2014		2013	2014
<u>Production:</u>					
Hydroelectric plants	39'572	39'308	-0,7	57,9	56,5
Nuclear power plants	24'871	26'370	6,0	36,4	37,9
Conventional thermal power plants:	2'721	2'447	-10,1	4,0	3,5
<i>thereof non-renewable</i>	1'671	1'339	-19,9	2,4	1,9
<i>thereof renewable</i>	1'050	1'108	5,5	1,5	1,6
Miscellaneous renewables*	1'148	1'508	31,4	1,7	2,2
<b>Domestic production</b>	<b>68'312</b>	<b>69'633</b>	<b>1,9</b>	<b>100</b>	<b>100</b>
Consumption by storage pumps (-)	2'132	2'355	10,5	3,1	3,4
<b>Net production</b>	<b>66'180</b>	<b>67'278</b>	<b>1,7</b>	<b>96,9</b>	<b>96,6</b>
Import (+)	36'208	37'438	3,4	-	-
Export (-)	38'604	42'929	11,2	-	-
Export balance	-2'396	-5'491	-	3,8	8,9
<b>Domestic consumption</b>	<b>63'784</b>	<b>61'787</b>	<b>-3,1</b>	<b>100</b>	<b>100</b>
Losses (-)	4'461	4'321	-3,1	7,0	7,0
<b>Final consumption</b>	<b>59'323</b>	<b>57'466</b>	<b>-3,1</b>	<b>93,0</b>	<b>93,0</b>
<u>Final consumption by sector:</u>				100	100
Households	18'768	18'287	-2,6	31,6	31,8
Agriculture	993	970	-2,3	1,7	1,7
Industry	18'768	18'019	-4,0	31,6	31,4
Services	16'009	15'519	-3,1	27,0	27,0
Transport**	4'785	4'671	-2,4	8,1	8,1

\* wood, biogas, photovoltaics, wind

\*\* thereof railways 2014: 3'070 GWh (2013: 3'143 GWh)



## Gas

Table 4

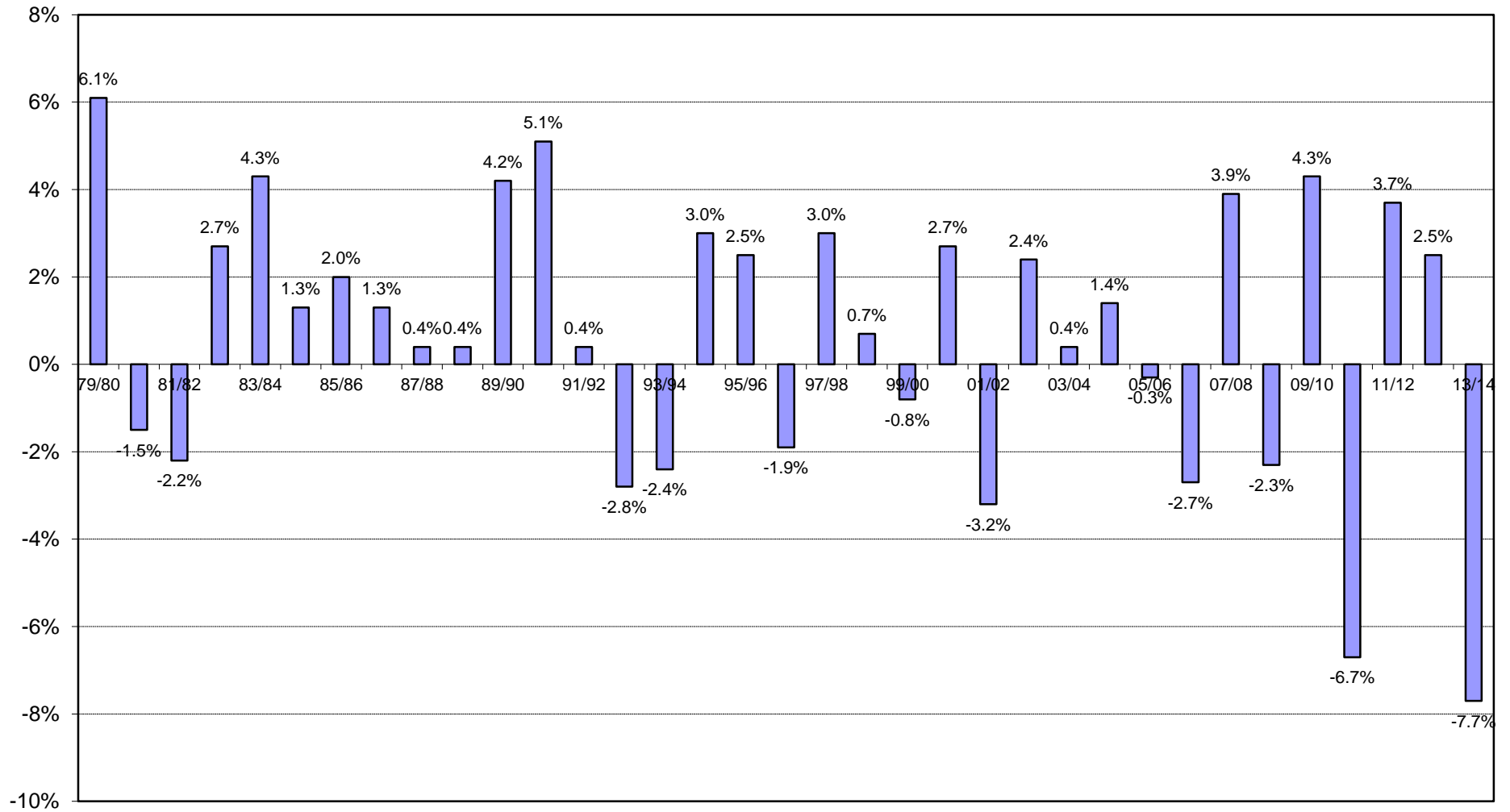
	GWh* (1 GWh = 3,6 TJ)		TJ		Change in %
	2013	2014	2013	2014	2013-2014
Gas-works gas made of propane/butane	-	-	-	-	-
Feed-in of biogas into the gas distribution system	128	192	460	690	-
Imports of natural gas	35'841	31'047	129'030	111'770	-13,4
Total	35'969	31'239	129'490	112'460	-13,2
less:					
Natural gas used for district heating and electricity production	2'314	1'381	8'330	4'970	-
Distribution losses and gasworks' own consumption	112	107	410	390**	-
Final consumption	33'543	29'751	120'750	107'100	-11,3

\* net calorific value (NCV: 36,3 MJ/Norm m<sup>3</sup>); in gas industry the gross calorific value (GCV: 40,3 MJ/Norm m<sup>3</sup>) is commonly used; NCV = 0,9 \* GCV.

\*\* distribution losses (source SVGW) provisional



### Rate of Change in Final Energy Consumption per Year





### Final Energy Consumption since 1910

